



MSDS

Material Safety Data Sheet

Vibe Evolution

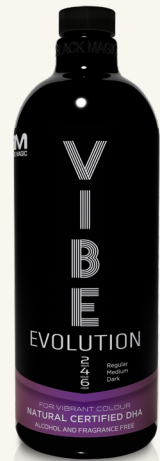
Issued Date - Correct as of 2 November 2012

Company Details

Company Name: Black Magic Concepts Pty Ltd
Address: Unit 23, 5-7 Inglewood pl, Baulkham Hills, NSW 2153
Tel: +61 2 9620 7665

Identification

Product Name: Vibe Evolution
Other Names: None
UN Number: N/A
DG Class: N/A
Hazchem Code: N/A
Poisons Schedule: Not Scheduled
Product Use: Cosmetic – Tanning of skin



Physical & Chemical Properties

Appearance: Water thin brown liquid
Melting Point/Boiling Point: N/A
Vapour Pressure: N/A
Specific Gravity: 1.025 – 1.065
Flash Point: N/A
Solubility in water: Soluble
pH Value: 3.0 – 5.5

Stability and Reactivity

Stability: Stable under recommended storage and
Correct handling conditions.
Store refrigerated when not being used.
Incompatibilities: Oxidising, reducing agents and heat



AUSTRALIAN
MADE AND
OWNED

Ingredients

aqua,aloe barbadensis leaf juice, dihydroxyacetone, caprylic capric triglyceride, isopropyl myristate, glycerin, peg-7 glyceryl cocoate, grape seed (vitis vinifera) oil, cetearyl alcohol, dicetyl phosphate, ceteth-10 phosphate, cetareth-20, squalane (olive), hyaluronic acid, panthenol,camellia sinensis (Red Riboose) leaf extract, dimethicone, phenoxyethanol, caprylyl glycol, tocopherol acetate (vitamin-E), yellow 5(CI 19140),red 40 (CI 17200), green 5 (CI 73360), blue1(CI 42090)

HEALTH HAZARD INFORMATION

Health Effects

Acute Swallowed:	No Evidence available, Possible symptoms may include vomiting or diarrhoea.
Acute eye:	Will cause eye irritation and temporary staining
Acute skin:	May irritate sensitive skin
Acute Inhaled:	No adverse inhalation health affects know, always use in well ventilated area.
Chronic:	No adverse affects known, recommended that extraction system be used where possible

First Aid

Swallowed:	Drink plenty of water, wash mouth out with water, if symptoms develop seek medical advice
Eye:	Flush eye with large amounts of water, seek medical advice
Skin:	If irritation develops discontinue use,
Inhaled:	Remove person to clean air environment



AUSTRALIAN
MADE AND
OWNED

Precautions for use

Exposure Standards:	None available
Application Procedure:	Ensure area is well ventilated
Personal Protection:	None required under normal use
Flammability:	Non Flammable
	SafeHandling Control
Storage:	Always store in refrigerator, out of reach from children
Transport:	Keep out of direct sunlight, or heated vehicles.
Spills and Wastage:	Mop up small spills with water and mop, large spills use absorption method to soak up and clean up remainder with mop and bucket
Fire Hazard:	Non Combustible

Vibe Evolution Label

BM BLACK MAGIC

SHAKE WELL BEFORE USE
We recommend that first time users of Vibe to conduct an allergy patch test. If irritation occurs discontinue use.

DIRECTIONS
To be applied by trained spray tanner in HVLP or airbrush machine, to achieve a medium colour leave on for 2 hours, to achieve a darker colour Vibe Evolution can be left on for 4-6 hours. If client wants an absolute dark result we suggest spray tanning an extra coat after showering first coat.

Store in a cool dark place

Made in Australia for Black Magic Concepts.

Black Magic Concepts Pty Ltd
Free Call: 1800469006 (Australia)
Free Call: 0800 900 956 (New Zealand)
International: +61 2 9620 7665
www.blackmagictan.com.au

VIBE EVOLUTION

2
4
6
hours

Regular
Medium
Dark

VIBE EVOLUTION
Vibe Evolution is so natural in so many ways, the Vibe range is completely fragrance and alcohol free. Vibe is completely non sticky once dried, and dries almost instantly.

ADVANCED DIMENSIONAL TECHNOLOGY

Colour Guide for Vibe Evolution

Shower in 1-2 hours for a natural looking tan
Shower in 2-4 hours for a dark tan
Shower in 4-6 for a very dark tan

INGREDIENTS
aqua, aloe barbadensis leaf juice, dihydroxyacetone, caprylic capric triglyceride, isopropyl myristate, glycerin, peg-7 glyceryl cocoate, grape seed (vitis vinifera) oil, diethyl phosphate, octah-10 phosphate, colostrin-20, squalene (olive), hyaluronic acid, panthenol, camellia sinensis (Red Ribose) leaf extract, dimethicone, phenoxylethanol, caprylyl glycol, tocopherol acetate (vitamin-E), yellow 5 (CI 19140), red 40 (CI 17200), green 5 (CI 73360), blue 1 (CI 42090)

**FOR VIBRANT COLOUR
NATURAL CERTIFIED DHA
ALCOHOL AND FRAGRANCE FREE**

**PROUDLY
MADE IN
AUSTRALIA**

**AUSTRALIAN
MADE AND
OWNED**